

## **REPORT OF THE FISHING ACTIVITY OF THE SPANISH FLEET IN *Sebastes mentella* FISHERY IN 2002**

**Fernando González**

Instituto Español de Oceanografía  
Centro Oceanográfico de Vigo  
Apartado 1552, 36200 Vigo  
[fernando.gonzalez@vi.ieo.es](mailto:fernando.gonzalez@vi.ieo.es)

### **INTRODUCTION**

The aim of this working document is to present the information of the year 2002 of the Spanish fishery of *Sebastes mentella* that is carried out in ICES Divisions XII and XIV. A total of 6 Spanish vessels have been fishing oceanic redfish in the Irminger Sea area in 2002 within the Divisions ICES XII and XIVb. No fishing activity for oceanic redfish in NAFO area was present along this year. The fishing activity was monitored by two scientific observer from April to the end of June and October.

### **Material and Methods**

Data from the Spanish commercial fishery (hauls, trawl time, locations, CPUE and length distributions) were recorded on board by scientific observers of the national sampling network. Data records were characterised by the vessel, date, depth and division and they were available in a tow-by-tow basis.

The Total effort was collected by the Secretaría General de Pesca Marítima.

### **FISHING EFFORT**

The fishing session was developed between April and November. Table 1 shows the distribution of the total effort (fishing days) by Division and month and table 2 shows sampling effort by Division and month. As we may observe, it has not been carried out effort in the NAFO Area in 2002.

The studies of the samplings and the knowledge of the fishery show that the effort carried out in Division XIV took place in the stratum of more than 500 meters depth, while the effort in the Division XII was carried out in the stratum of less than 500 meters.

### **CATCHES**

The total catches were estimated by the CPUE collected by the scientific observers. The observed CPUE in Division XII in October was applied to all the effort of this Division. Table 3 shows the catches by Division and month. The Spanish catches of *Sebastes mentella* in 2002 is estimated about 8 950 t, of which the 85% have been carried out in the Division XIV to more than 500 meters deep.

## **CPUE**

Table 4 and figure 1 show the Spanish CPUE by year and depth stratum, data revised from 2002 NWWG WD N° 4. The trend in CPUE in depth shallower than 500 m. indicates a slight increase in the last 3 years, in depth deeper than 500 m the CPUE decrease since 1999 until 2001 and increase in 2002.

The total Spanish CPUE is not a good indicator since the sampling in the different strata of depth it is not equivalent in all years.

## **LENGTH DISTRIBUTIONS**

Table 4 and figure 2 present the Spanish catches length distributions in percentage by ICES Division for the year 2002. The Spanish catches length distributions of 2002 are very similar to those of the previous years, the length distributions in Division XII (<500 meters) are lower than those of the Division XIV (> 500 meters).

## **References**

F. González , G. Ramilo and I. Loureiro “Description of the Spanish pelagic fishery of oceanic redfish (*Sebastes mentella* Travin) in the North Atlantic (1995-2001)”. 2002 NWWG. WP N° 4.

ICES (2002): Report of North-Western Working Group. ICES C. M

Effort (fishing days)	Month								
Division	4	5	6	7	8	9	10	11	Total
XII				42		14	49	2	107
XIV	45	124	159	60					388
Total	45	124	159	102		14	49	2	495

Table 1.- Distribution of the Spanish fishing effort (fishing days) by ICES Division and month.

Sampling Effort (days)	Month								
Division	4	5	6	7	8	9	10	11	Total
XII							11		11
XIV	10	31	30	24					95
Total	10	31	30	24			11		106

Table 2.- Distribution of the Spanish observed effort (fishing days) by ICES Division and month.

Catches (tons)	Month								
Division	4	5	6	7	8	9	10	11	Total
XII				548		183	640	26	1397
XIV	692	1883	4247	731					7553
Total	692	1883	4247	1279		183	640	26	8950

Table 3.- Spanish catches of *Sebastes mentella* by ICES Division and month in 2002.

CPUE (Kg/Hr)	Month								
Depth	1995	1996	1997	1998	1999	2000	2001	2002	Total
<500 meters	922	600	543	775		738	792	912	748
>500 meters	1064	1357	1030	806	1337	1238	1056	1145	1177
Total	924	967	826	798	1337	1121	959	1122	973

Table 4 .- Spanish CPUE of *Sebastes mentella* by depth stratum and year.

	Division		
Length	XII	XIV	Total
20			0.00
21			0.00
22	0.00	0.00	0.00
23	0.00	0.00	0.00
24	0.00	0.01	0.01
25	0.19	0.01	0.05
26	0.57	0.07	0.18
27	1.12	0.09	0.31
28	0.86	0.12	0.29
29	1.43	0.21	0.48
30	2.22	0.39	0.80
31	3.47	0.64	1.26
32	4.04	1.24	1.86
33	7.70	1.80	3.10
34	12.76	2.68	4.90
35	16.12	3.63	6.38
36	17.03	4.91	7.58
37	12.76	6.32	7.74
38	9.02	7.72	8.01
39	5.66	8.06	7.53
40	3.12	9.61	8.18
41	1.41	10.65	8.62
42	0.49	12.25	9.66
43	0.00	10.76	8.39
44	0.00	9.60	7.49
45	0.00	5.30	4.14
46	0.00	3.17	2.47
47	0.00	0.60	0.47
48	0.00	0.13	0.10
49	0.00	0.01	0.00
50	0.00	0.00	0.00
TOTAL	100	100	100
NºInd measured	1675	9587	11262
Nº Samplings	9	48	57
Total Catch (Kg)	1397011	7553108	8950120
Ratio M/F	2.38	0.98	

Table 5.- Spanish catches length distributions (in percentage) of *Sebastes mentella* in 2002

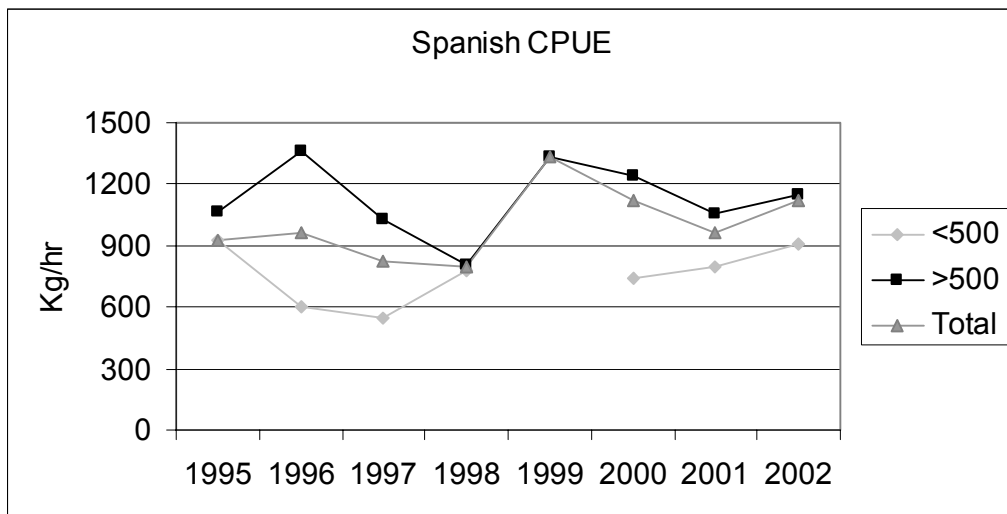


Figure 1.-CPUE of the Spanish fleet in the *Sebastes mentella* fishery by year and depth stratum.

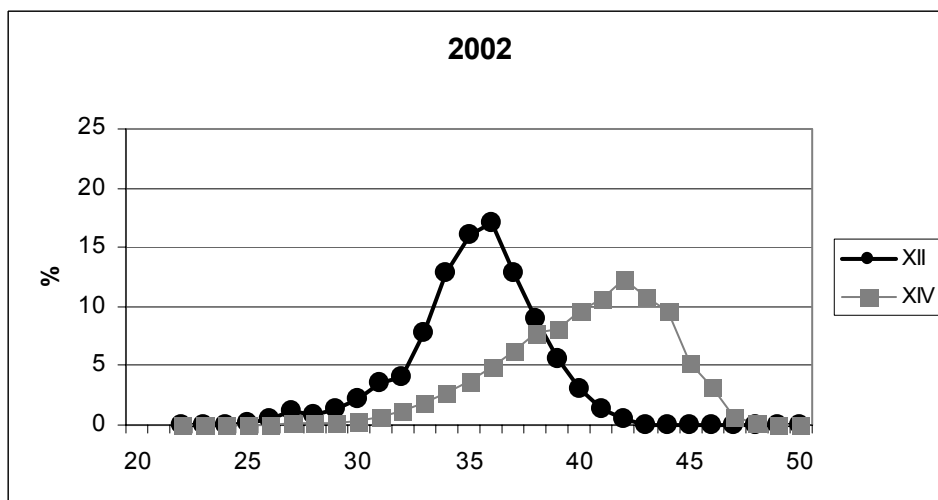


Figure 2.- Spanish catches length distributions (in percentage) of *Sebastes mentella* in 2002.