

Length distributions from Norwegian fishery for Greenland halibut in ICES XIVb, 2001

Agnes C. Gundersen and Inge Fossen
Møre Research Section of Fisheries
P.O. Box 5075
N-6021 Ålesund, Norway

Length measurements were collected during the commercial fishery targeting Greenland halibut in East Greenland waters in Summer 2001. Samples were collected from both longlines and trawl. Longline catches were taken mainly between Kap Bille Bank (62°N) and Heimlands Ridge (64°N), while trawl catches were taken in the areas around Heimlands Ridge (Figure 1). From a number of trawl hauls about 100 fish were measured. In the longline fishery Greenland halibut from the entire setting or from one hook magazine was measured. This resulted in about 100-200 measurements from each of the settings chosen. Length distributions from trawl and longlines are given in Figure 2 and 3 respectively.

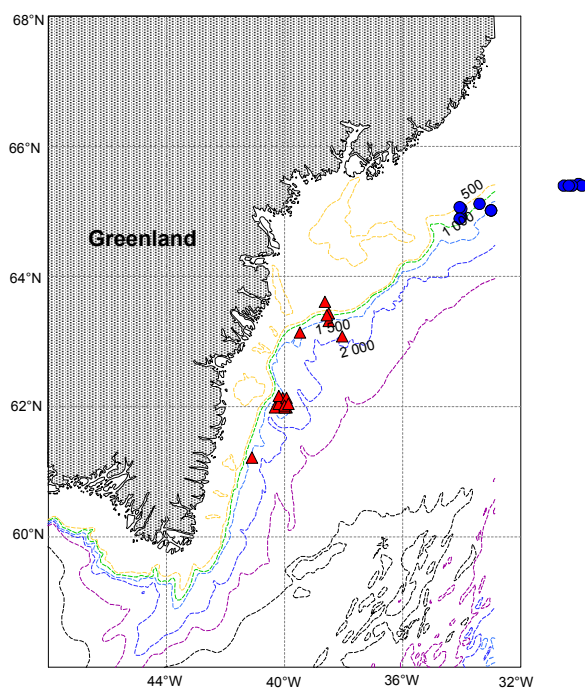


Figure 1. Norwegian commercial fishery in Ices XIVb, 2001. Triangles = longlines, Circles = trawl.

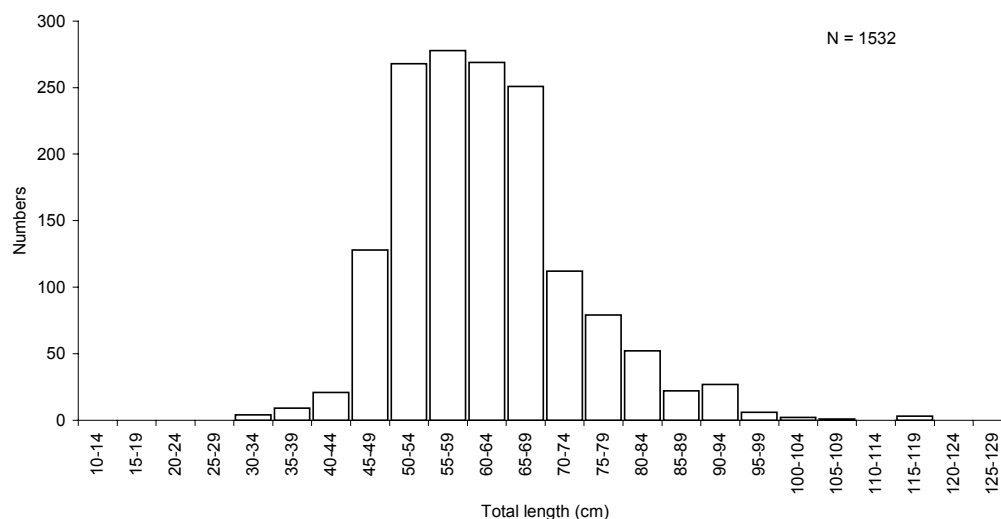


Figure 2. Length distribution from Norwegian trawl fishery.

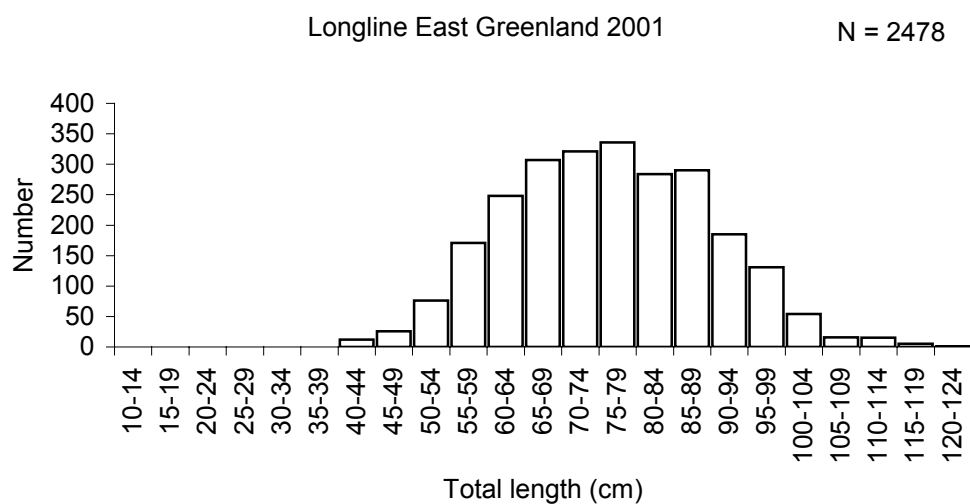


Figure 3. Length distribution from Norwegian longlinefishery trawl fishery.

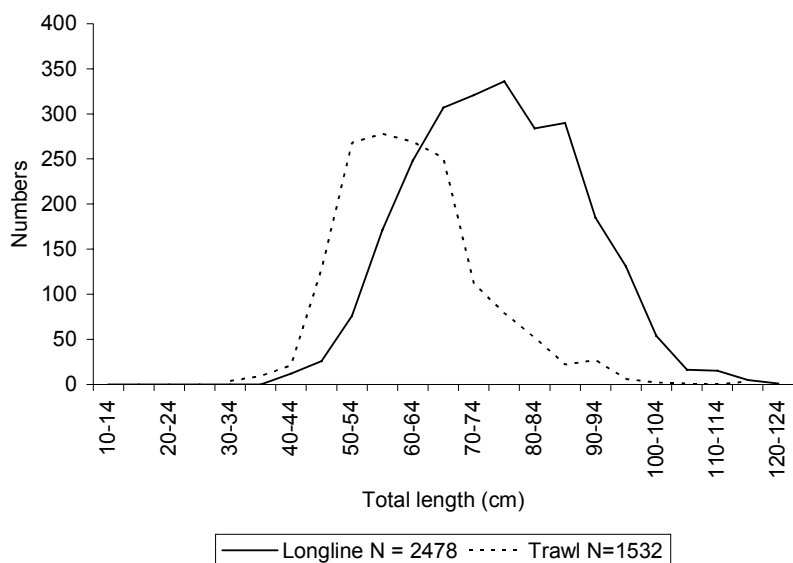


Figure 4. Trawl and longline length distributions of Greenland halibut in ICES XIV b, Summer 2001.

Comparisons to previous years

Longline:

Comparisons made between years for longline settings stations from Kap Bille bank (about 62°10N). Data from the commercial vessels during 2001 (n=2478) are compared to length measurements carried out by scientific personnel during 1996 (n=5984) and 2000 (n=4734). Samples from 2001 are more similar to the 1996 than the 2000 data (Figure 5).

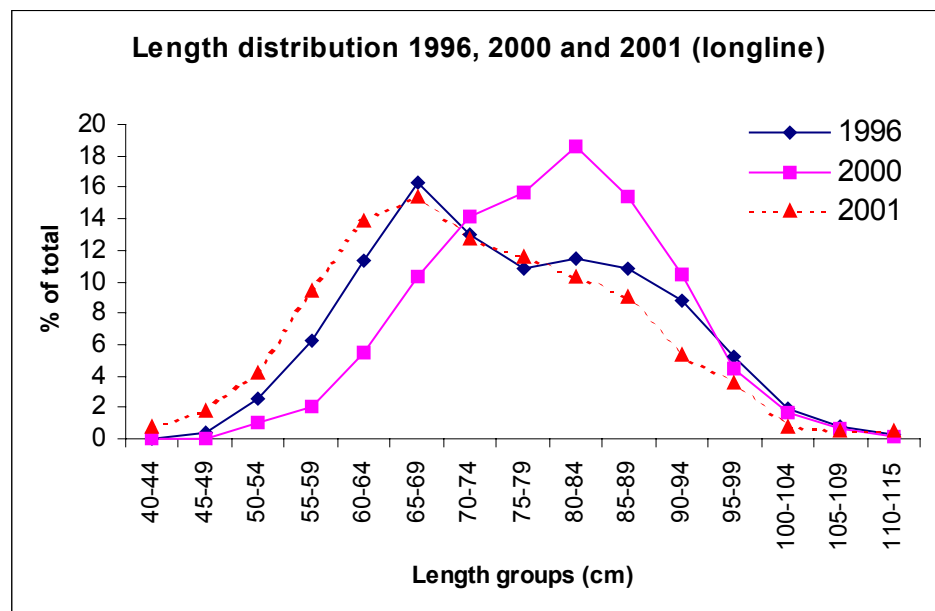


Figure 5. Length distributions from longline catches in ICES XIVb for 1996, 2000 and 2001.

Trawl

As for longline commercial trawl samples during 2001 (n=1532) are compared with length measures carried out by scientific personnel during 1998 (n=6167) and 2000 (n=8998). All samples during 2001 are from the area between 63°40 – 65°25 N on the east coast at depths between 700 and 1370m which is similar to previous years (Figure 6).

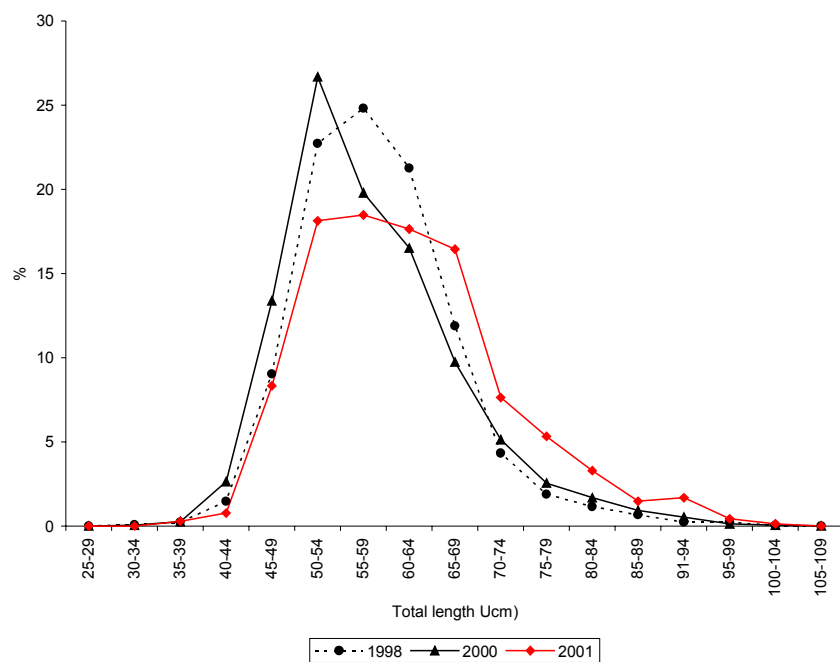


Figure 6. Length distributions from trawl catches in ICES XIVb for 1998 (dotted), 2000 (black solid with triangles) and 2001 (red). N = 1532 (2001), N = 8998 (2000) and N=6167 (1998).